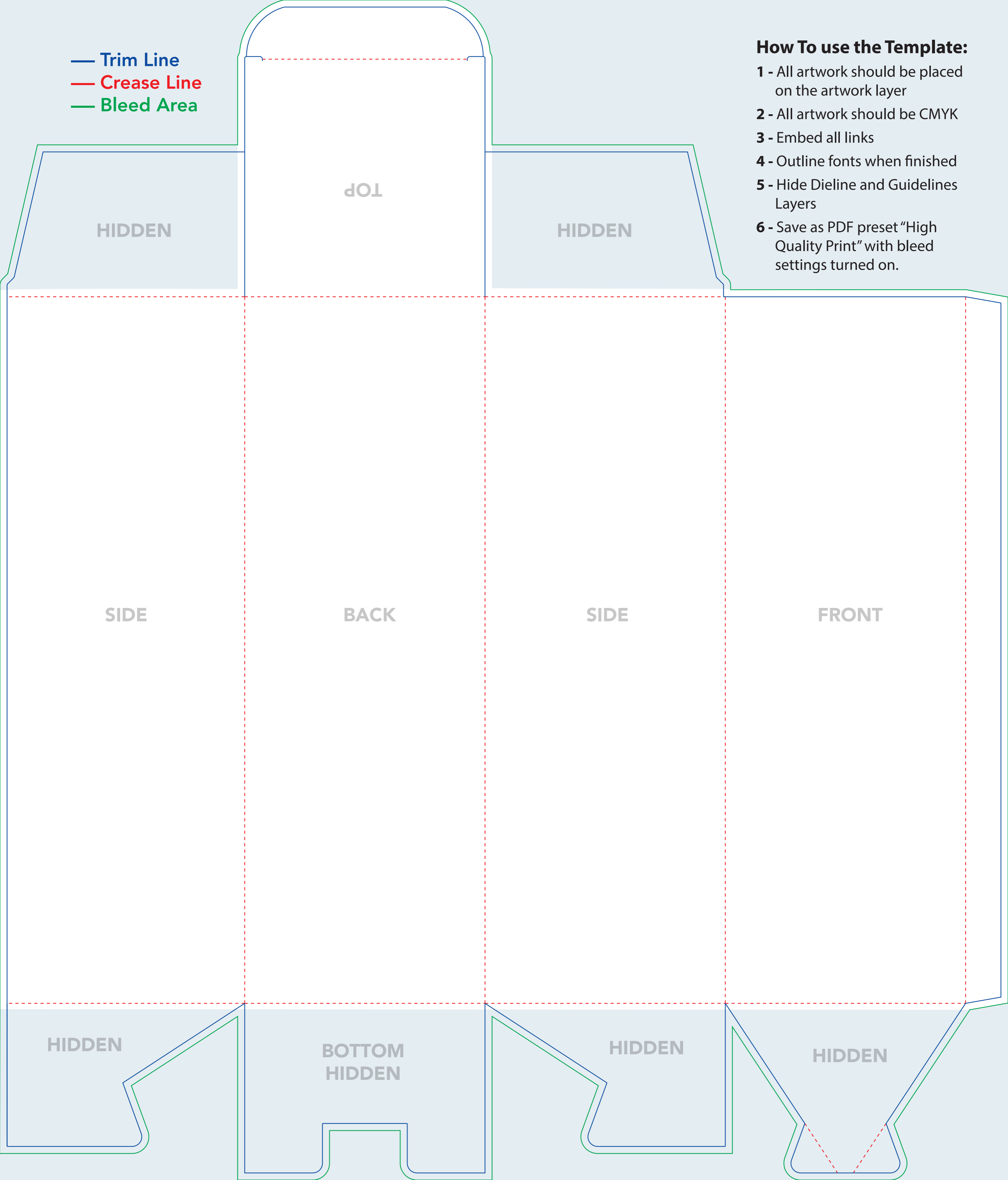


- Trim Line
- Crease Line
- Bleed Area

**How To use the Template:**

- 1 - All artwork should be placed on the artwork layer
- 2 - All artwork should be CMYK
- 3 - Embed all links
- 4 - Outline fonts when finished
- 5 - Hide Dieline and Guidelines Layers
- 6 - Save as PDF preset "High Quality Print" with bleed settings turned on.



TOP

HIDDEN

HIDDEN

SIDE

BACK

SIDE

FRONT

HIDDEN

BOTTOM  
HIDDEN

HIDDEN

HIDDEN